



## AVK SUPPORT TILE TYPE UST ID110

80/46  
022

AVK universal support tile for distribution valves and service connections valves

### Types

- Type UST ID110
  - Round synthetic tile

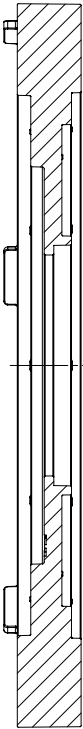
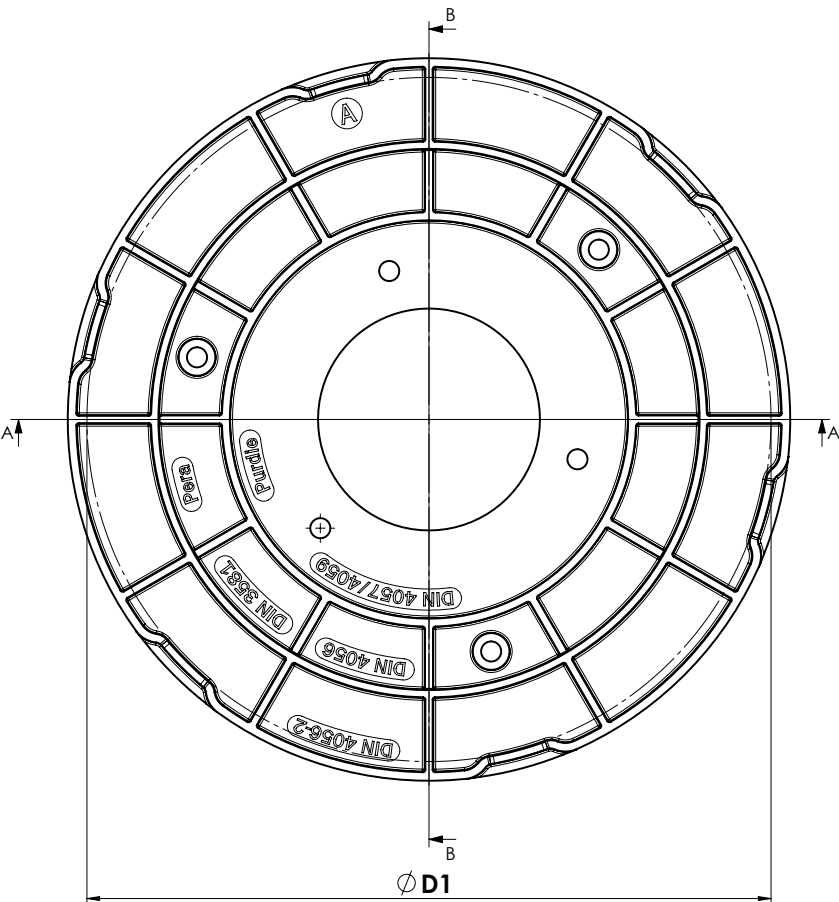
The support tile UST ID110 is suitable for surface boxes: DIN4056, DIN4057, DIN4059, DIN3581, DIN 4056-2, Purdie, Pera and BAC

### Features

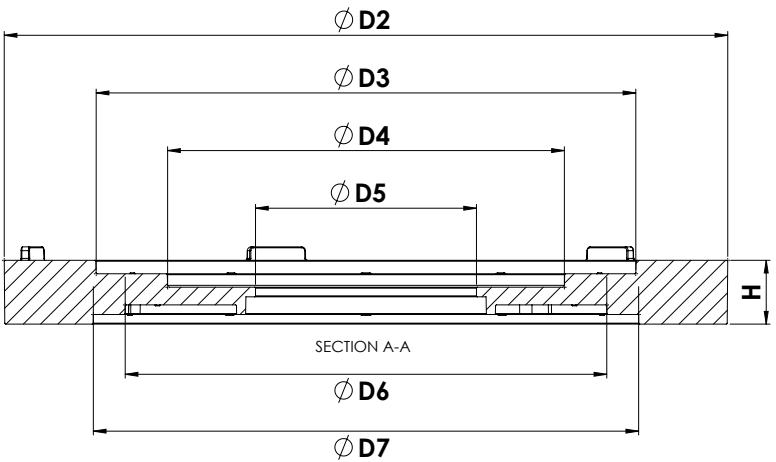
- Support tiles will increase support surface in weak soils
- Facilitates even load transfer into the ground
- Round opening allowing downpipes up to Ø110mm
- Centers downpipe to ensure access to valve operating element at all times
- Significant weight advantage compared to support tiles made of traditional materials (i.e. concrete)
- Manufactured from recycled materials – low CO<sub>2</sub> footprint



Expect... **AVK**



SECTION B-B



Component list

Support tile	HDPE
--------------	------

Reference nos. and nominal dimensions

AVK ref. nos.	D1 mm	D2 mm	D3 mm	D4 mm	D5 mm	D6 mm	D7 mm	H mm	Total weight in kg
80-46-00040	355	375	280	205	115	250	285	35	0.9